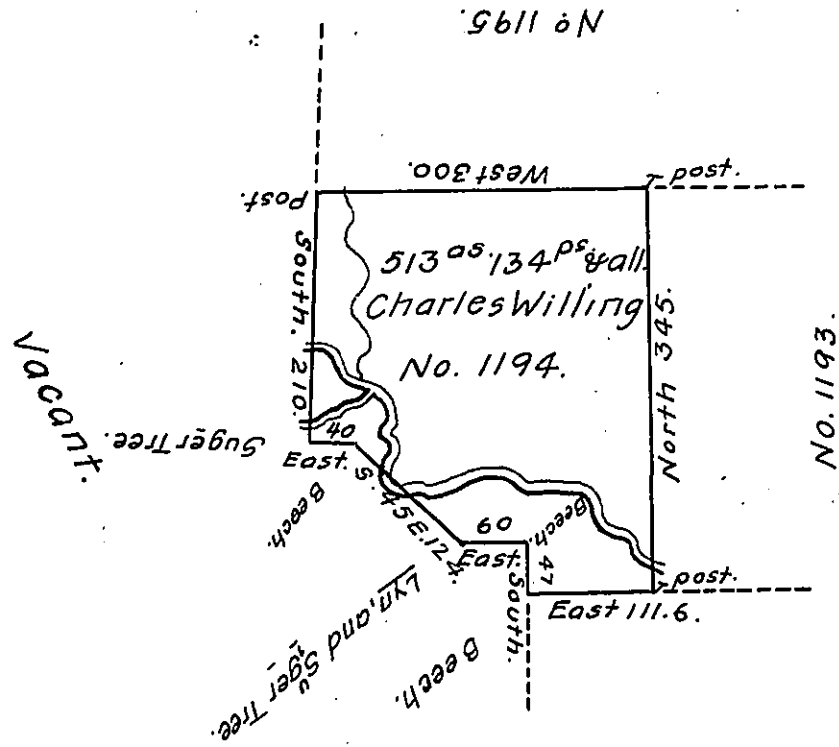


2/4



Situate about two miles and a half South of the big Elk, Lick and half a West of the Portage Branch of Sinamahoning Creek in North<sup>d</sup> County containing 513<sup>as</sup> 134 perches and the usual allowance for roads &c. Surveyed May 28<sup>th</sup> 1793 for Charles Willing in persuance of a warrant No. 1194 Dated the 21<sup>st</sup> Day of April 1792.

Daniel Brodhead, Esq<sup>r</sup> S.G.

John Canan, D.S.

IN TESTIMONY that the above is a copy of the original remaining on file in the Department of Internal Affairs of Pennsylvania, made conformably to an Act of Assembly approved the 16th day of February, 1833, I have hereunto set my Hand and caused the Seal of said Department to be affixed at Harrisburg, this fifth day of May, 1914.

*Henry Houck*  
Secretary of Internal Affairs.